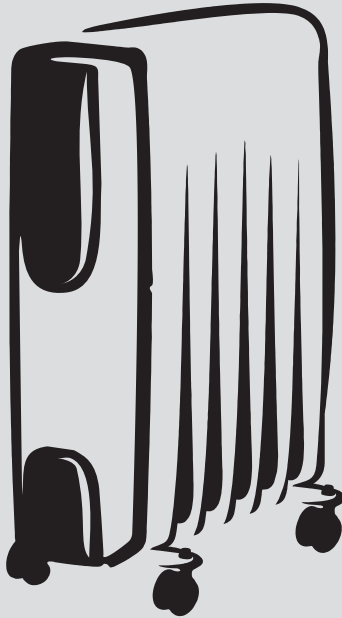


# ALDA

keep your kitchen alive



## OIL FILLED HEATER SAA 711

IS: 302-2-30



CM/L-9861303

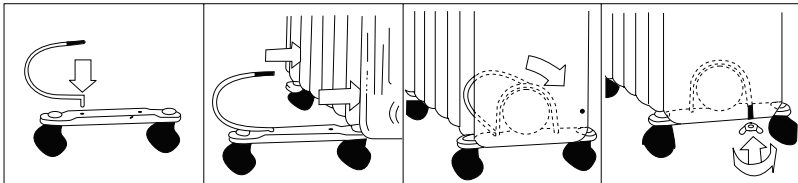
**USER'S GUIDE**

## KNOW YOUR OIL FILLED HEATER



## HOW TO USE YOUR OIL FILLED HEATER

Remove the heater and all the accessories from the carton. The Oil filled Heater is packed with the castor wheels unattached. Attach the wheels before operating as explained below:



## Assembly

- Place the Heater body upside-down on a scratch-free location, make sure it is stable and will not fall.
- Screw off the wing nuts from the u-shaped bolt provided. Attach the u-shaped bolt to the flange between first and second fins (near the front cover).
- To attach the castor mounting plate to the heater body, insert the threaded ends of the u bolt in the holes on the castor mounting plate.
- Screw the wing nuts back to the u bolt and fasten the wing nut properly. Do not over tighten, this may damage the heater flange.
- The rear flange must be mounted between the end two fins.

**Caution:** Do not operate without wheels attached. Do operate the OFR only in up right position (wheels on the bottom, controls on the top), any other position could create a hazardous situation.

## Usage

Place the heater on the floor at least 90cm away from the wall and any other objects such as furniture, curtains or plants. (Make sure the power supply used corresponds to the one on the rating label). With the thermostat control switch in the “O” position and the power setting switch in the “OFF” position; plug the heater into the mains power supply.

## Thermostat


The desired room temperature can be adjusted using the thermostat. Simply turn the thermostat knob clockwise, to increase the heat, and anti-clockwise to decrease the temperature.

## Power

Switch the heater to the desired power setting. The power switch lights up when activated.

Fins	Switch Position	Watts
9	I	800
	II	1200
	I & II	2000
	Fan	400
11	I	800
	II	1200
	I & II	2000
	Fan	400
13	I	1000
	II	1500
	I & II	2500
	Fan	400

## Turbo

The Alda Heater SAA 711 is fitted with a heating fan which warms the room more quickly. To turn this function ON, push the button .

A safety device, the overload protector, switches off the appliance if it overheats due to an accumulation of dust on the air intake and output grills. To restart it, unplug from the mains and leave the appliance to cool down. Clean the air intake and output grills with a vacuum cleaner, then replug into the mains and turn on again. Do not cover the heater at any time during operation. There is a risk of fire if the heater is covered. After use switch off the power, set the thermostat control switch to the "0" position and unplug from the mains supply.

## CLEANING AND MAINTENANCE

Always disconnect the heater from the mains supply before cleaning. Clean the outside of the heater with a damp cloth. DO NOT use waxes or polishes as these may react with the heater and cause discoloration.

Save the box for off season storage. Clean the heater following the cleaning instructions above. Remove the wheel base assemblies. Place the heater, and wheel assemblies in the original box, and store in a cool and dry place. If you choose to store your heater fully assembled be sure to cover it to protect it from dust.

## DO'S & DON'TS

- Always disconnect the heater from the mains supply when not in use and when cleaning.
- Do not leave the heater "ON" unattended.
- Never cover the heater as this may lead to risk of fire.
- Keep the heater a distance of at least 90cm from any combustible material, such as furniture, curtains, bedding clothes or papers.
- Do not attempt to open any part of the oil fins.
- Keep the heater clean. Do not allow objects to enter the ventilation, as this may cause electric shock, fire or damage the heater.
- Close supervision is required when any appliance is used near or by children.

- Never allow the cord to touch wet or hot surfaces, become twisted or be within the reach of children.
- Do not use outdoors.
- Do not place on or near a hot gas or electric burner.
- Never use the appliance with a damaged cord or plug or after the appliance has malfunctioned or been damaged in any way.
- Never attempt to open any part or dismantle the controls. Responsibility for failure cannot be accepted if these instructions have been ignored.
- Do not use the appliance for anything other than its intended use.
- This appliance is intended for household use only.
- The appliance is not intended for use by young children or infirm persons without supervision.
- Do not use this heater in the immediate surroundings of a bath, a shower or a swimming pool.
- This heater is filled with a precise quantity of special oil. Repairs requiring opening of the oil container are only to be made by the manufacturer or his service agent who should be contacted if there is an oil leakage. Regulations concerning the disposal of the oil when scrapping the appliance has to be followed.

### Specifications

**Input Voltage** : 220 - 240 V AC 50 Hz

**Power Consumption** :

Fins	Watts	Fan (W)
9	2000	400
11	2000	400
13	2500	400

**Packaging List** : Heater Assy. - 1, Castors with Nuts - 4 each  
 U Bolt - 2, Plate - 2, Wing Nut - 2,  
 User manual cum warranty card -1

## WARRANTY

The company warrants to get the Oil Filled Heater or any part thereof repaired free of charge for a period of one year from the date of purchase, should any defect develop due to faulty or defective workmanship or material. However, the plastic parts, glass, buttons and items subject to normal wear and tear due to operation are not covered under warranty.

### Terms of Warranty:

- The Bill/Cash Memo should be presented.
- No repair work should be carried out by any unauthorised person.
- Oil Filled Heater should be used as per the directions given in the user's guide.
- Any defects caused by accident, improper or reckless use, abuse or commercial use are not covered under warranty.
- The Serial no. has not been tampered with.
- The modification/alteration of any nature is made in the Oil Filled Heater.
- Normal wear & tear of the product is not covered under warranty

The company accepts no responsibility for any consequential losses arising out of misuse or negligence on the part of the user.

OIL FILLED HEATER \_\_\_\_\_ SAA 711 - 9 | 11 | 13 Fins

SERIAL NO. \_\_\_\_\_ BILL NO. \_\_\_\_\_

DATE OF PURCHASE \_\_\_\_\_

NAME OF OWNER \_\_\_\_\_

ADDRESS \_\_\_\_\_

DEALER'S STAMP & SIGNATURE

**ALDA**  
keep your kitchen alive

Marketed by

Glen Appliances Pvt. Ltd., I-34, DLF Industrial Area, Ph-I, Faridabad

Fax: 0129-227434 Helpline: 9548-130-131

E-mail: enquiry@glenindia.com Website:www.aldaindia.com